



NEW

STRADA EVO RV

Bike Carrier | 022 707

The new Atera bike carrier Strada EVO RV sets new standards in flexibility and user-friendliness, with a focus on the camping vehicle segment.

The generous distance between the support bar and the vehicle ensures comfortable use without the need to turn the handlebars.

A special feature is the extendable roller drawer, which, in combination with the innovative positioning of the support bar, allows the opening of various types of swing doors and big tailgates even when loaded.

- Gross weight: 18.4 kg
- Maximum payload: 60 kg
- Maximum payload per bike rail: 30 kg
- External dimensions:
L: 1080 / B: 330 / H: 750 mm
- Bike rail spacing: 190 mm
- Bicycle tire width: Up to 3.0 inches
- Bicycle frame diameter: 25-80 mm



German
engineering



e-bike
certified



ideal
for vans



add on
bike rail

Atera GmbH, Im Herrach 1, 88299 Leutkirch im Allgäu | www.atera.de
Service Hotline: +49 (0) 75 61 - 98 344 0 | E-Mail: info@atera.de

Atera



NEW

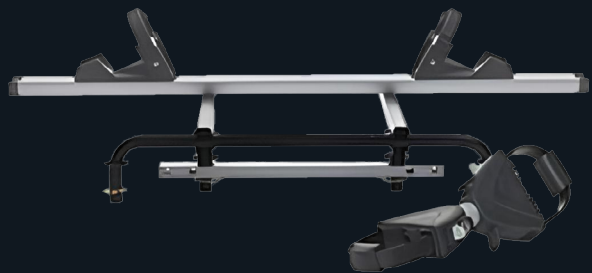
STRADA EVO RV

Extension Kit | 022 711

This tow bar carrier accommodates two bikes and can be easily extended to hold three bikes. With a maximum load capacity of 60 kg for three bikes, the Strada EVO RV combines high load capacity with elegant functionality.

The removable spacers, in conjunction with the robust aluminum bar, provide optimal support for various types of bicycles, including e-bikes and models with carbon frames.

Experience the functionality of the Strada EVO RV in action! Click here for the product video:



- Bike Rail with Spacer: Short, from wheel to wheel
- Maximum additional payload per bike rail: 15 kg
- Maximum payload of bike rack including extension kit: 60 kg

